

Covered by one or more of the following
patents & patents pending, found at:
<http://www.springcompany.com/downloads>

**JOHN
EVANS'
SONS** Est. 1850

SPRINGS MADE BETTER

Two stage lock
shown fully engaged.

The
**SIDE
LOAD**
Constant Force Balance System®

Disengagement of
two stage lock system

image 1

Push *up* firmly on
bottom of carrier with
both index fingers
(left side shown).



The
**SIDE
LOAD**
Constant Force Balance System®

Disengagement of
two stage lock system

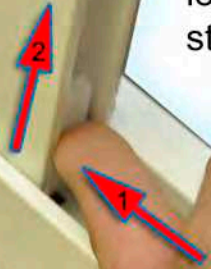
image 2

Covered by one or more of the following
patents & patents pending, found at:
<http://www.springcompany.com/downloads>

**JOHN
EVANS'
SONS** Est. 1850

SPRINGS MADE BETTER

While applying *upward*
pressure, slide both carrier
locks *inward* to retract 1st
stage of lock system.



The
**SIDE
LOAD**
Constant Force Balance System®

Disengagement of
two stage lock system

image 3

Covered by one or more of the following
patents & patents pending, found at:
<http://www.springcompany.com/downloads>

**JOHN
EVANS'
SONS** Est. 1850
SPRINGS MADE BETTER



Lower sash slightly.
(see image 5)

The
**SIDE
LOAD**
Constant Force Balance System

Disengagement of
two stage lock system

image 4

Covered by one or more of the following
patents & patents pending, found at:
<http://www.springcompany.com/downloads>

**JOHN
EVANS'
SONS** Est. 1850

SPRINGS MADE BETTER



Note change
in clearance.
(from image 4)

The

**SIDE
LOAD**

Constant Force Balance System®

Disengagement of
two stage lock system

image 5

Covered by one or more of the following patents & patents pending, found at:
<http://www.springcompany.com/downloads>

**JOHN
EVANS'
SONS** Est. 1850

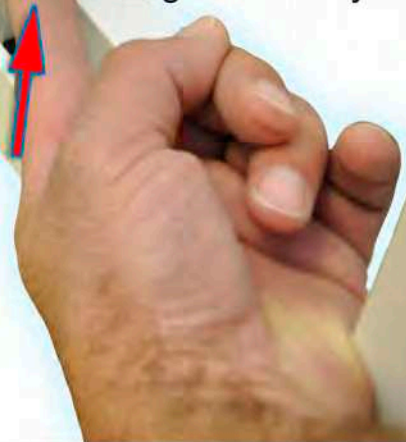
SPRINGS MADE BETTER

With *inward* pressure, fully disengage 2nd stage of lock system.

The **SIDE
LOAD**
Constant Force Balance System®

Disengagement of two stage lock system

image 6



Lock system shown fully disengaged.

The **SIDE
LOAD**
Constant Force Balance System®

Disengagement of two stage lock system

image 7

