

Covered by one or more of the following  
patents & patents pending, found at:  
<http://www.springcompany.com/downloads>

**JOHN  
EVANS'  
SONS** Est. 1850

SPRINGS MADE BETTER

Two stage lock  
shown fully engaged.

*The*  
**SIDE  
LOAD**  
*Constant Force Balance System®*

Disengagement of  
two stage lock system

image 1

Push *up* firmly on  
bottom of carrier with  
both index fingers  
(left side shown).

The  
**SIDE  
LOAD**  
*Constant Force Balance System*®

Disengagement of  
two stage lock system

image 2

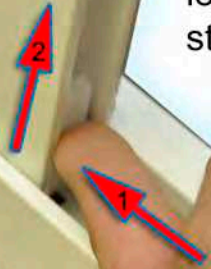


Covered by one or more of the following  
patents & patents pending, found at:  
<http://www.springcompany.com/downloads>

**JOHN  
EVANS'  
SONS** Est. 1850

SPRINGS MADE BETTER

While applying *upward*  
pressure, slide both carrier  
locks *inward* to retract 1<sup>st</sup>  
stage of lock system.



The  
**SIDE  
LOAD**  
*Constant Force Balance System*®

Disengagement of  
two stage lock system

image 3

Covered by one or more of the following  
patents & patents pending, found at:  
<http://www.springcompany.com/downloads>

**JOHN  
EVANS'  
SONS** Est. 1850  
SPRINGS MADE BETTER



Lower sash slightly.  
(see image 5)

The  
**SIDE  
LOAD**  
*Constant Force Balance System*

Disengagement of  
two stage lock system

image 4

Covered by one or more of the following  
patents & patents pending, found at:  
<http://www.springcompany.com/downloads>

**JOHN  
EVANS'  
SONS** Est. 1850

SPRINGS MADE BETTER



Note change  
in clearance.  
(from image 4)

The

**SIDE  
LOAD**

*Constant Force Balance System*®

Disengagement of  
two stage lock system

image 5

Covered by one or more of the following patents & patents pending, found at:  
<http://www.springcompany.com/downloads>

**JOHN  
EVANS'  
SONS** Est. 1850

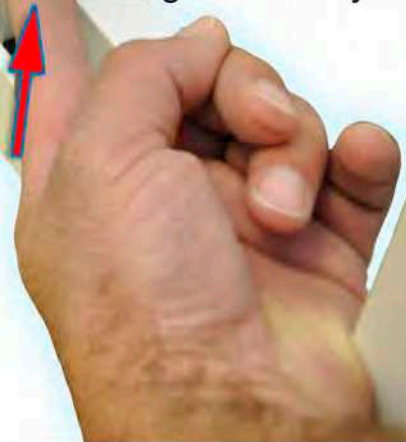
SPRINGS MADE BETTER

With *inward* pressure, fully disengage 2<sup>nd</sup> stage of lock system.

The **SIDE  
LOAD**  
*Constant Force Balance System*®

Disengagement of two stage lock system

image 6



Covered by one or more of the following patents & patents pending, found at: <http://www.springcompany.com/downloads>


**JOHN  
EVANS'  
SONS** Est. 1850  
SPRINGS MADE BETTER

Lock system shown fully disengaged.

The **SIDE  
LOAD**  
*Constant Force Balance System*®


Disengagement of two stage lock system

image 7



The **SIDE  
LOAD**  
*Constant Force Balance System*®

Covered by one or more of the following patents & patents pending  
found at: <http://www.springcompany.com/downloads>



Pat. 7,980,028